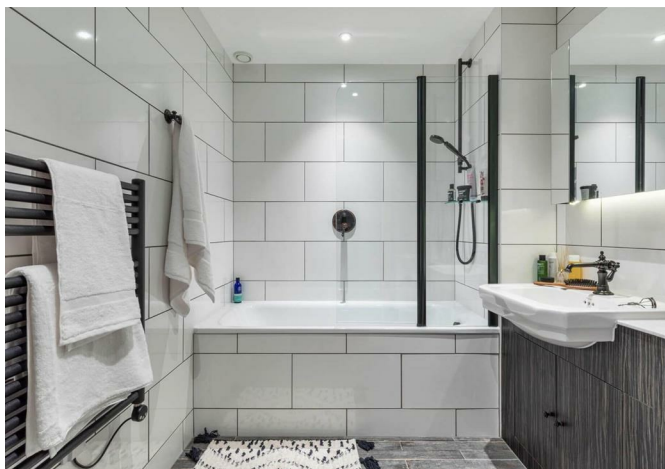
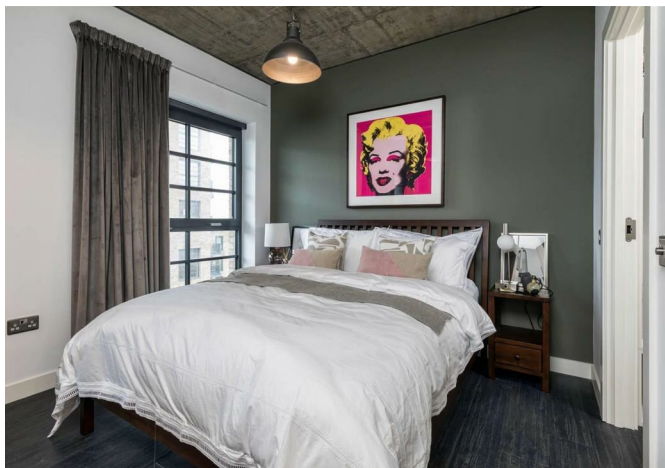




534543 Ferrum, South Way, Wembley, HA9 0HZ
£1,827



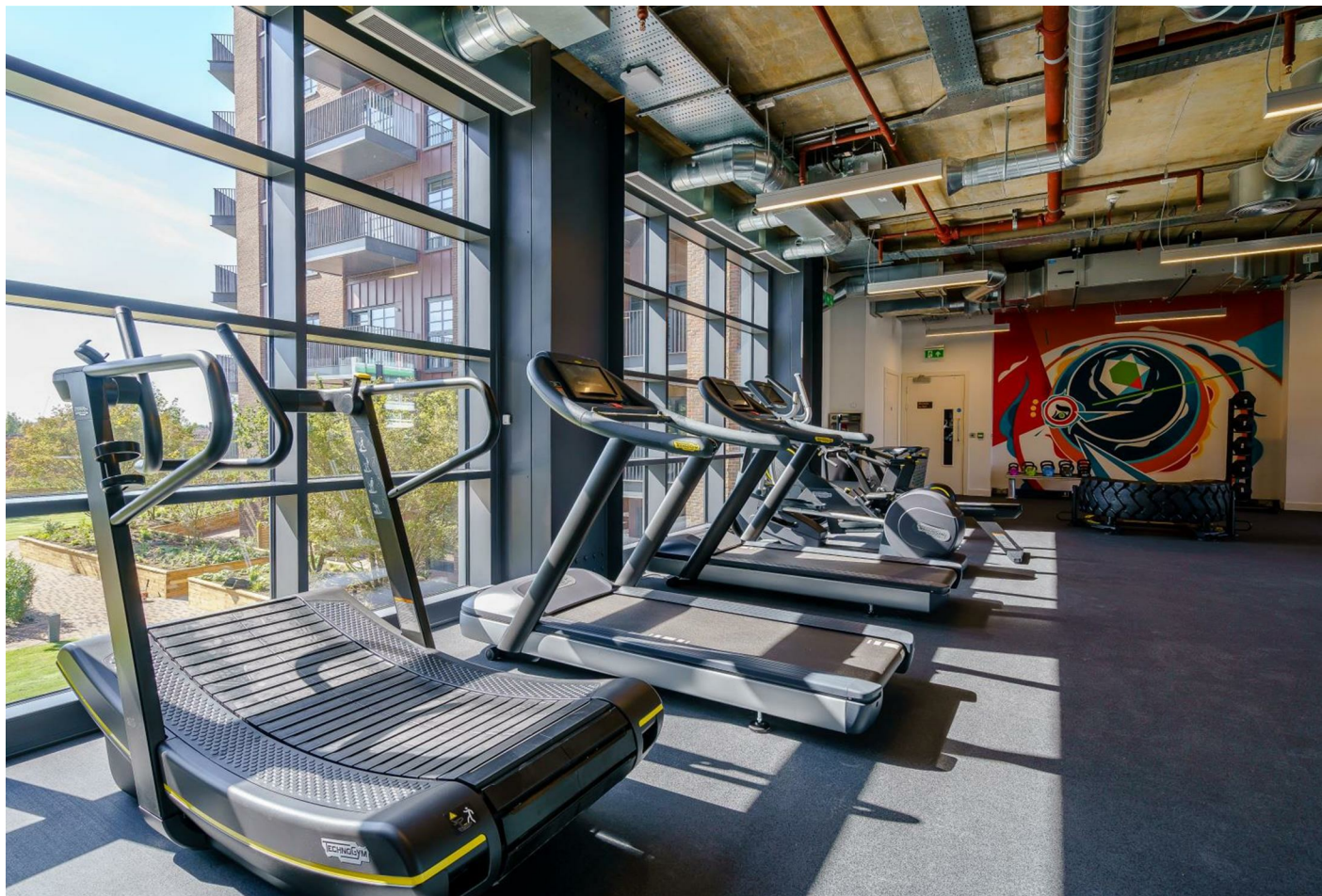
534543 Ferrum, South Way, Wembley, HA9 0HZ

£1,827

New Offer: Save 12% on Your Rent. Boldly distinctive and unlike anything else in London - welcome to Ferrum. Inspired by New York's iconic warehouse lofts, Ferrum blends industrial charm with contemporary design. Exposed brickwork and copper pipework meet smooth wooden worktops, rich leather furnishings, vibrant accents, and high-spec Samsung appliances. Every detail has been carefully curated by our expert design team to deliver a one-of-a-kind living experience. South-facing apartments offer expansive views stretching from the City to Richmond and Surrey beyond.

Wembley Park, one of London's most exciting new districts - home to Bread Ahead, Boxpark, Troubadour Theatre and the London Designer Outlet (around 70 shops, cafés and restaurants plus a nine-screen Cineworld). OVO Arena Wembley, Wembley Stadium and the tube are within a short walk, putting Central London about 12 minutes away via the Jubilee and Metropolitan lines. Trains from Wembley Stadium reach. Managed by Quintain Living, the award-winning team behind Wembley Park. Photos show a very similar apartment in this building however the exact layout/floor/view may vary. Other incentives available T&Cs apply; see Quintain Living website for details. Price before discount: £2087.

Description



Situation

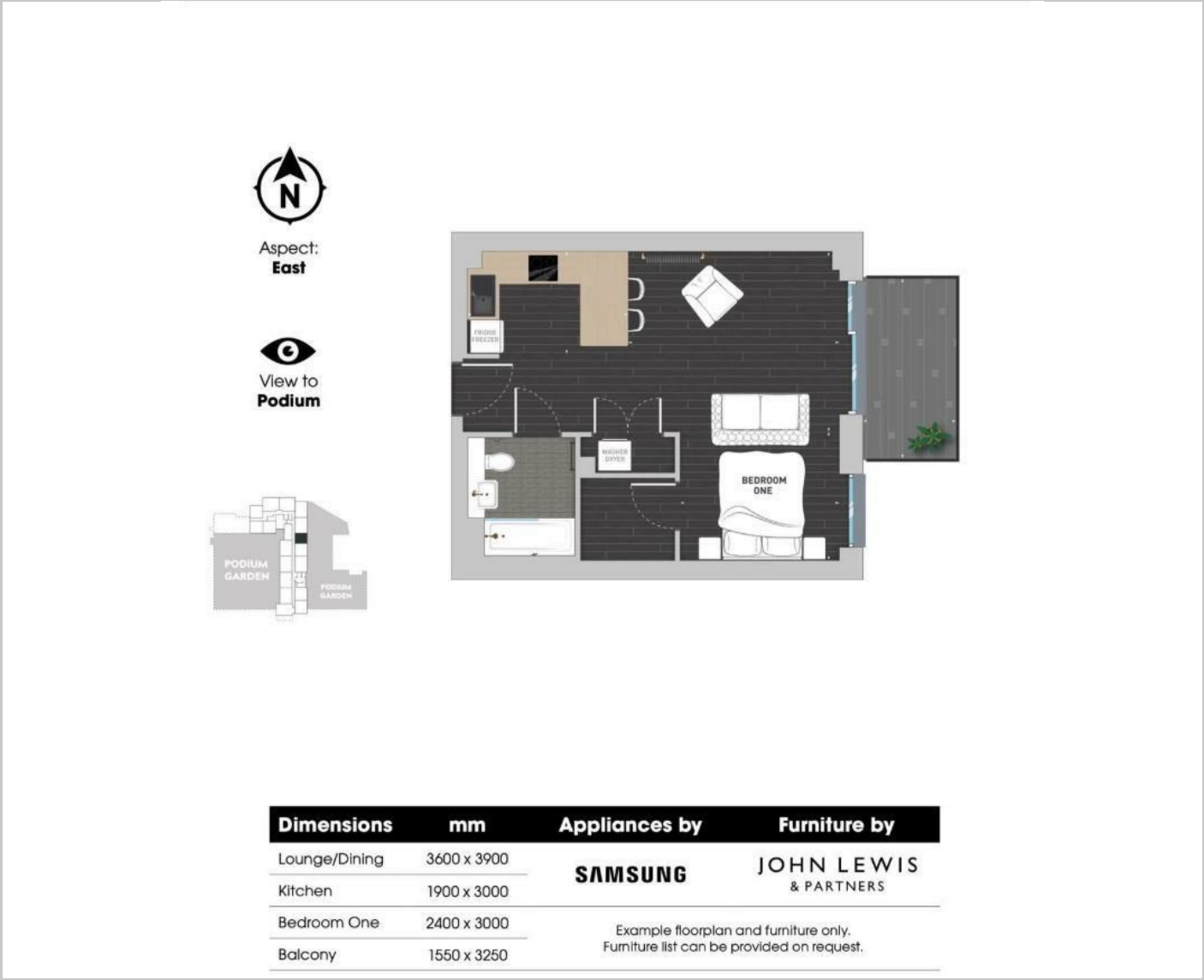


Furnished

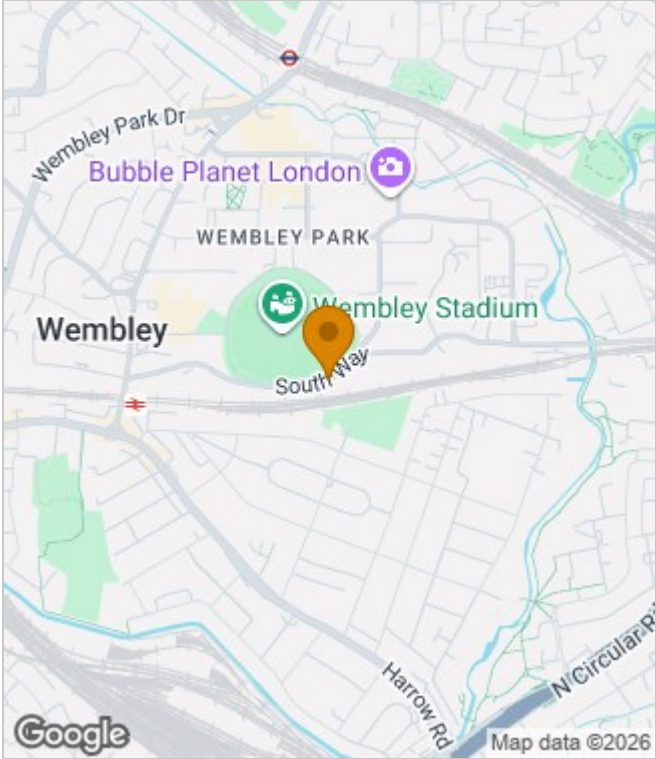
Council Tax Band: C

Available:

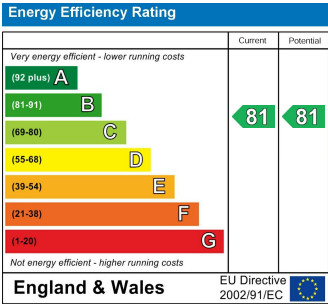
Floor Plans



Area Map



Energy Performance Graph



These particulars, whilst believed to be accurate are set out as a general outline only for guidance and do not constitute any part of an offer or contract. Intending purchasers should not rely on them as statements of representation of fact, but must satisfy themselves by inspection or otherwise as to their accuracy. No person in this firms employment has the authority to make or give any representation or warranty in respect of the property.